

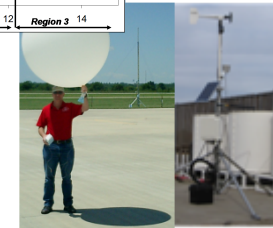
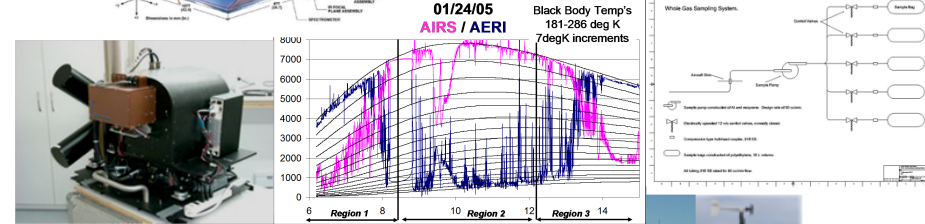
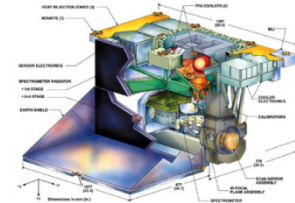


# Cooperative Atmospheric Measurement Program (CAMP) Study Overview

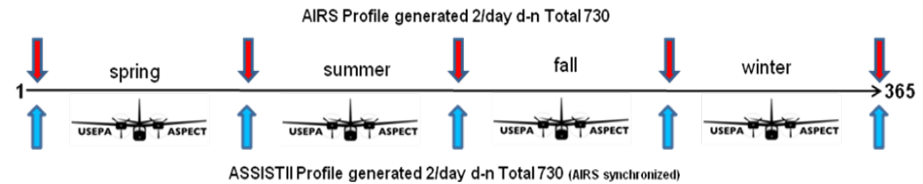
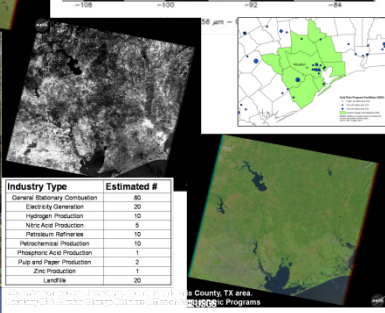
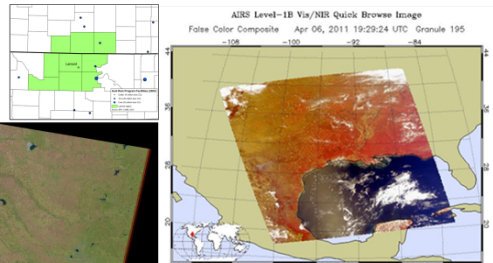
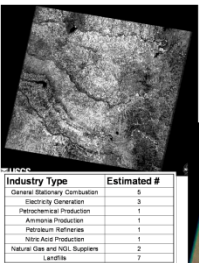
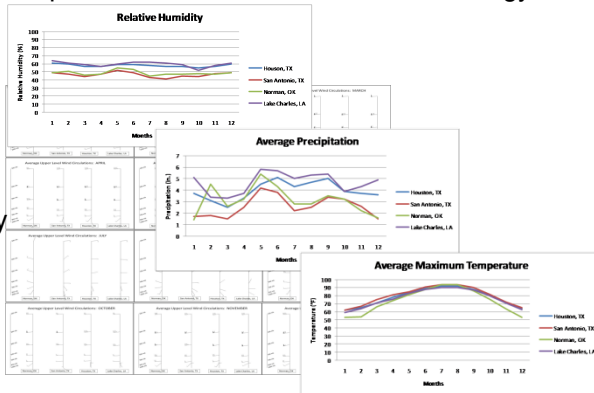


## CAMP Study Goals:

- ✓ Assess the accuracy of GHG estimates derived from spaceborne, airborne, and ground-based remotely sensed passive **infrared** data over land.
- ✓ Measure and retrieve GHG profiles from a large regional emitter: Houston, TX (Harris Co., TX).
- ✓ Measure and retrieve GHG profiles from a rural region: Lamont, OK (Grant Co., OK).
- ✓ Determine if emissions from Harris Co., TX. can be measured in Grant Co., OK and their transport correlated with seasonal climatology.



Average monthly upper level wind circulation →



The CAMP study, is an autonomous civil committee led - government supported activity. The committee consists of expert participants from each of the four measurement areas being utilized in the study:

- ✓ Ground based zenith measurements
- ✓ Airborne nadir measurements
- ✓ Airborne physical sample collection and subsequent measurement analysis
- ✓ Spaceborne nadir measurements

